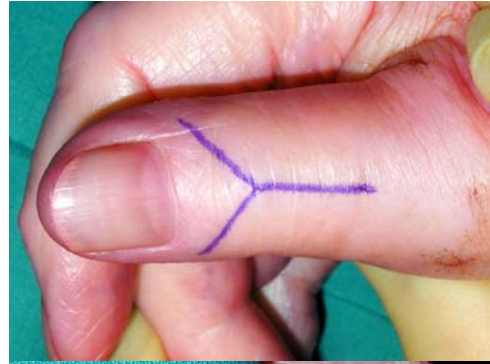


DIGITAL FUSION

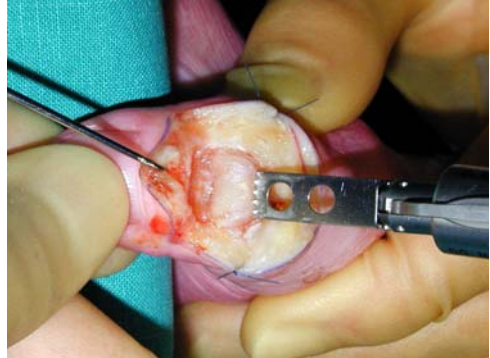
- 'Mercedes' incision
- through extensor tendons
- stitch flaps back



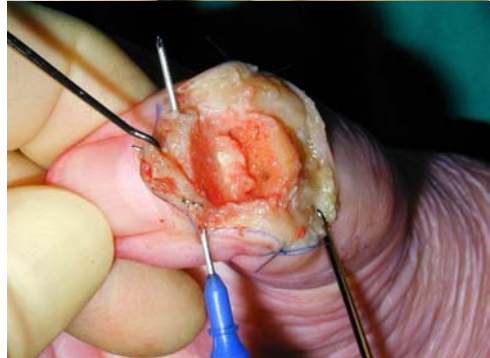
- divide collateral ligaments
- soft tissue release, synovectomy
- wide exposure of surfaces



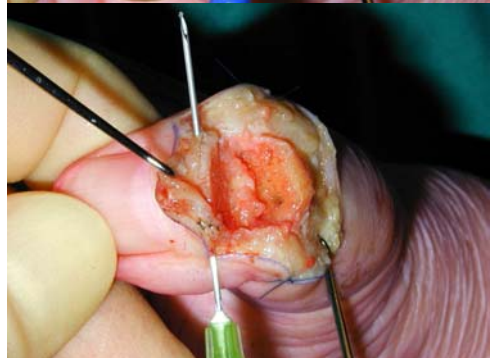
- cut surfaces to desired angle
- distal surface perpendicular
- proximal surface at angle



- transverse drill hole to distal phalanx with 0.9mm K wire
- pass 19G needle through track



- insert tension wire into bevel
- draw wire through distal phalanx
- do this **before** inserting parallel K wires, or they will impinge

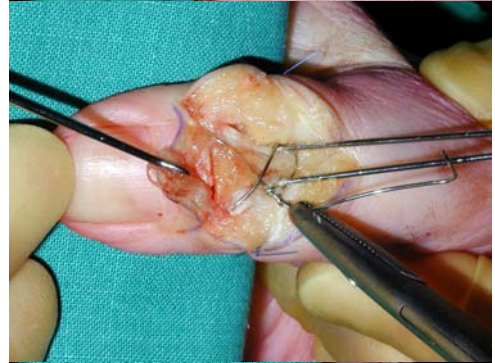


DIGITAL FUSION

- pass 2x 0.9mm K wires retrograde from cut surface proximally
- leave ends prominent
- impale distal phalanx on wires



- advance wires into distal phalanx
- avoid insertion into nailbed
- best hold in cortex; avoid tip under skin
- wind tension wire as figure-8



- tighten tension wire
- bury end
- cut K wires short
- haemostasis and closure

